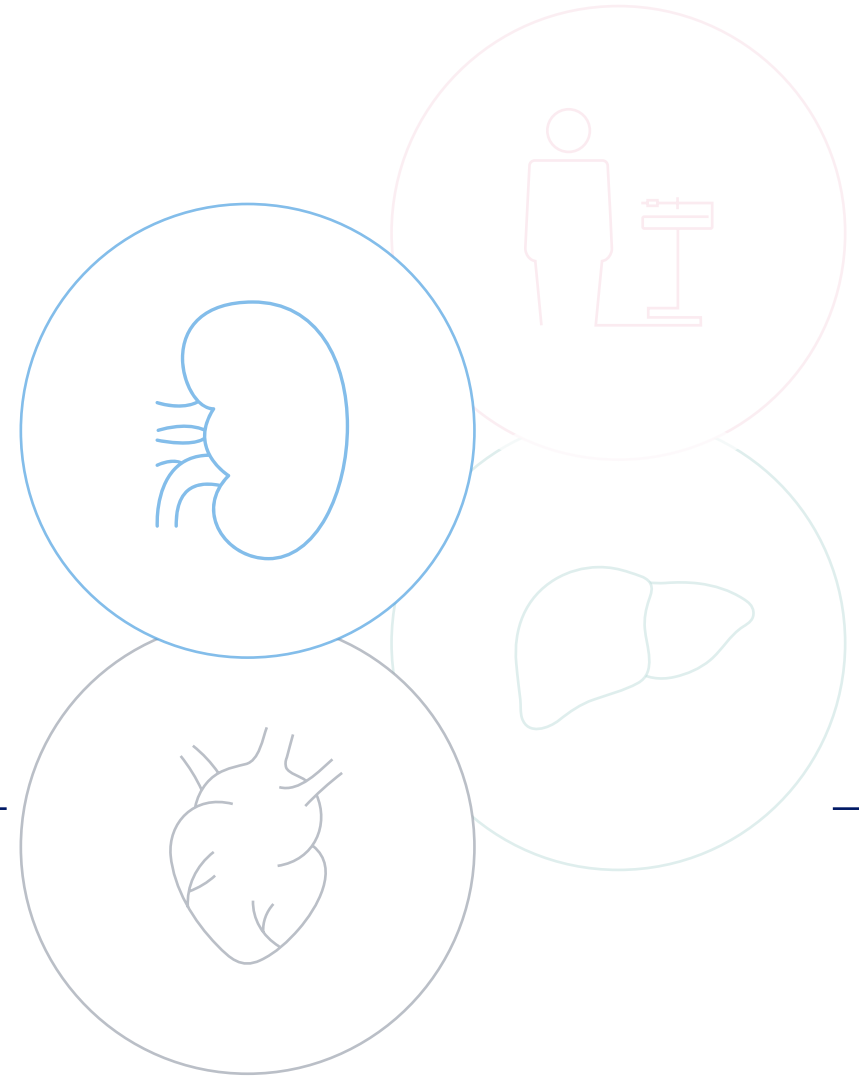


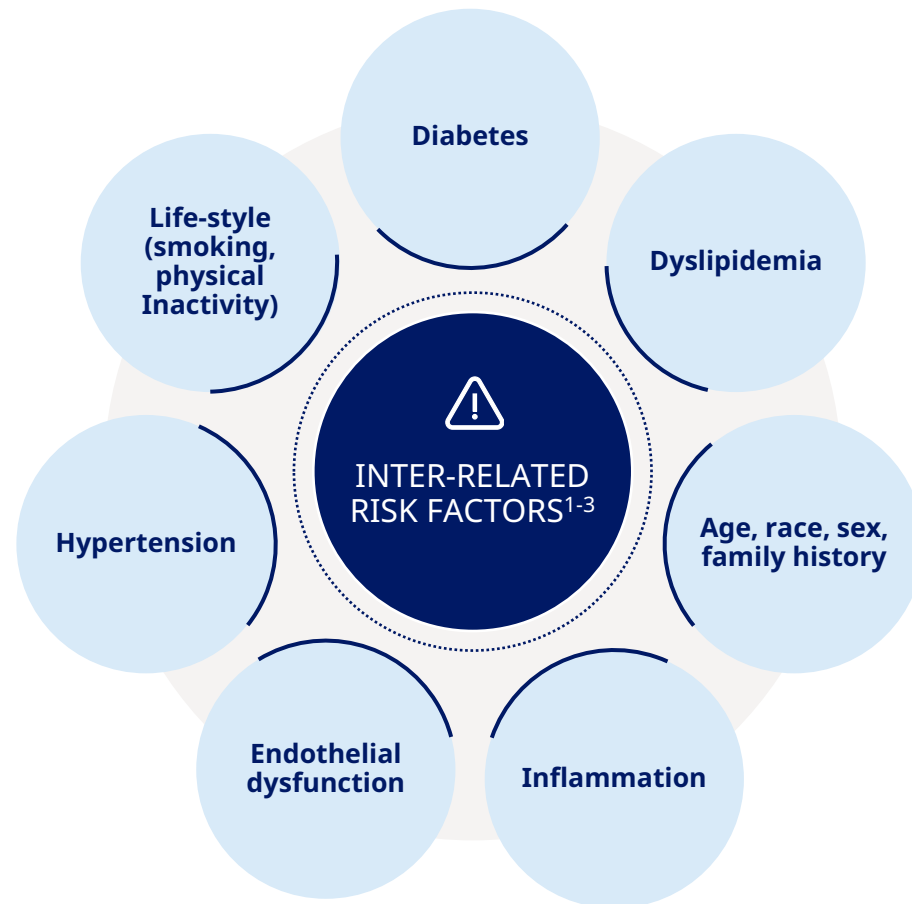
Introduction to cardiometabolic diseases

CV and Renal



Cardiometabolic diseases

Key cardiometabolic diseases and some inter-related risk factors



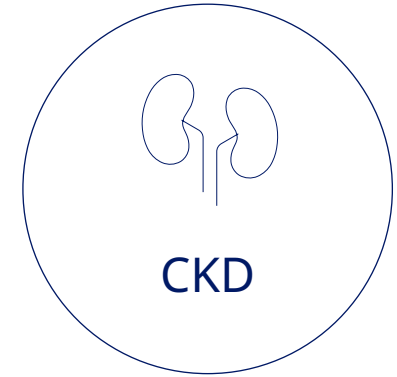
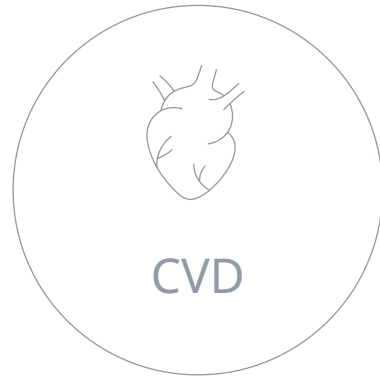
This deck provides an overview of certain investigational compounds being studied in clinical development programs. Efficacy and safety have not been established for these investigational compounds. There is no guarantee that any of these compounds will become commercially available for the use(s) under investigation.

NAFLD, non-alcoholic fatty liver disease

1. Cannon CP. Clin Cornerstone. 2007;8(3):11-28; 2. Uy AB et al. J ASEAN Fed Endocr Soc. 2021;36(1):12-24; 3. Kahn R. et al. Circulation. 2007;115(13):1806-1811; 4. <https://www.acc.org/tools-and-practice-support/quality-programs/cardiometabolic-health-alliance>

Despite Current Treatments, Cardiometabolic Diseases Represent a Considerable Burden

Serious chronic diseases are often associated with diabetes and obesity



Association

- In people with diabetes, 50% of deaths are due to CVD¹
- >66% of obesity-related deaths are due to CVD²

- 80% of people with NASH live with obesity and 30-40% have diabetes⁴

- 40% of people with diabetes have diabetic nephropathy⁶
- Up to 54% of people with CKD have obesity⁷

US Prevalence

121.5 million³

>6.4 million⁵

37 million⁸

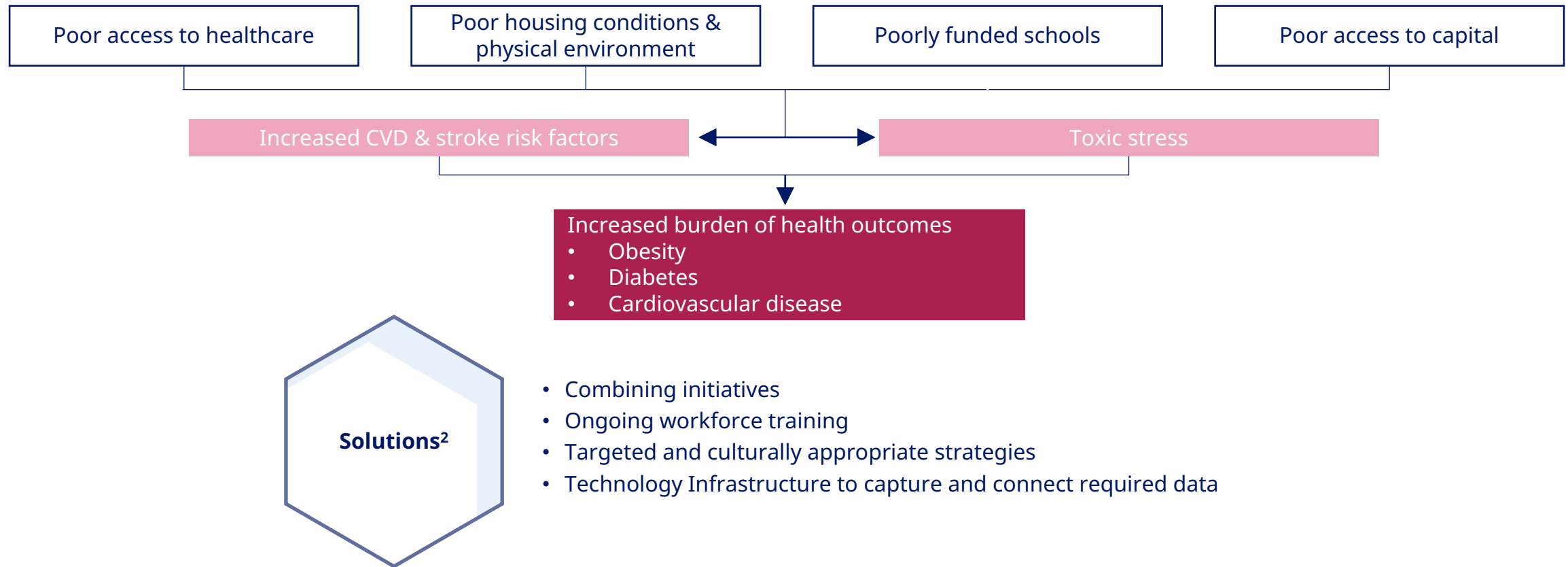
This deck provides an overview of certain investigational compounds being studied in clinical development programs. Efficacy and safety have not been established for these investigational compounds. There is no guarantee that any of these compounds will become commercially available for the use(s) under investigation.

CKD: Chronic kidney disease; CVD: Cardiovascular disease; NASH: Non-alcoholic Steatohepatitis.

1. Einarson et al. *Cardiovasc Diabetol* (2018) 17:83; 2. Powell-Wiley. 2021. *Circulation*. 143(21) e984-e1010; 3. Benjamin et al. *Circulation* 2019 Mar; 139(10), e56-e528; 4. Cusi, K. *Liver International*. 2020;40(Suppl 1):82-88; 5. Younossi et al *Diabetes Care* 2020;43:283-289; 6. Gross et al. *Diabetes Care* 2005 Jan, 28(1): 164-176; 7. Evangelista et al. 2018. *PLoS ONE* 13 (2): e0193559; 8. CDC 2021 <https://www.cdc.gov/kidneydisease/publications-resources/ckd-national-facts.html> Accessed 6 Oct 2021

Social Determinants Affect Cardiometabolic Risk

Racial/ethnic minorities, the socioeconomically disadvantaged, and the underinsured **are most affected by persisting health disparities in US healthcare¹**



This deck provides an overview of certain investigational compounds being studied in clinical development programs. Efficacy and safety have not been established for these investigational compounds. There is no guarantee that any of these compounds will become commercially available for the use(s) under Investigation.

CVD, cardiovascular disease

1. Churchwell et al. Circulation 2020. 142; e1-e15; 2. Meneghini LF et al. Diabetes Spectr. 2019;32:303–11.

